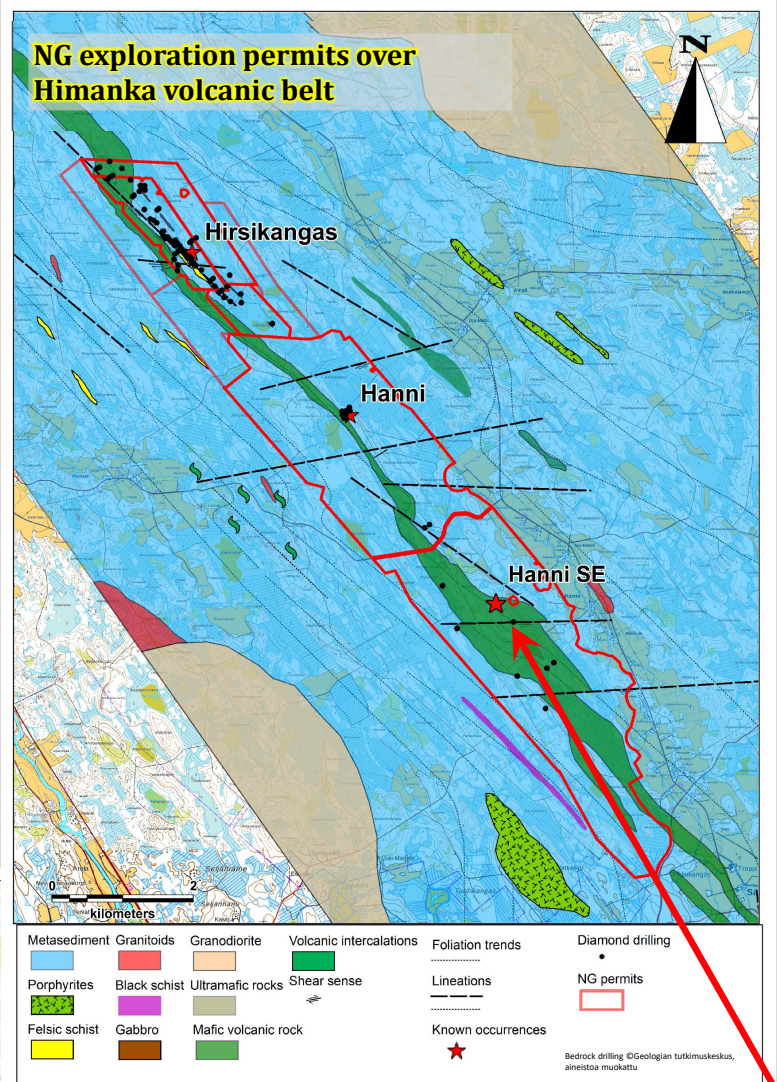


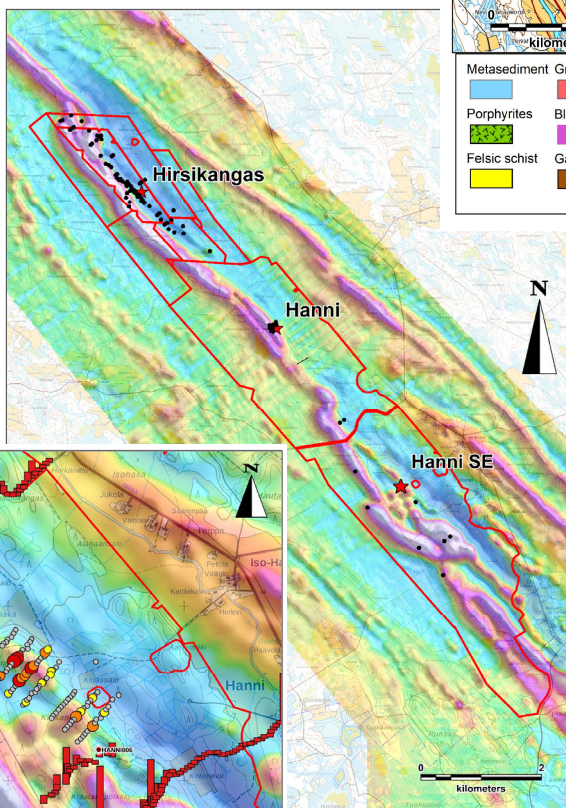
HIRSIKANGAS & HANNI

- Hirsikangas deposit and Hanni and Hanni SE drilled occurrences are associated with the contact of Himanka volcanic belt along 6 km strike length.
- **Hirsikangas:** Resource estimate of 2,270 kt @ 1.2 g/t Au (at 0.5 g/t cutoff).
- **Hanni:** nine DDHs totaling 1287 m. Best intersections:
 - **R1:** 8m @ 0.6 ppm Au from 31.6 m
 - **R3:** 5.5 m @ 3.23 ppm Au from 35.4 m
 - **R5:** 1 m @ 43.8 ppm Au from 39.7 m
 - **R6:** 7.55 m @ 1.14 ppm Au from 86.45 m
 - **R7:** 6.25 m @ 2.65 ppm Au from 90.3 m
- **Hanni SE:** seven DDHs totaling 610 m: one hole intersected significant gold zones.
- Major underexplored potential along the volcanic/metasediment contact zone.



Right: UAV map over Himanka volcanic belt and historical drill holes.

Below: Auger profiles (histogram) over Hanni SE target and recent IL profiles.



DRILL HOLE	FROM	TO	INTERVAL	PPM AU
HANNI006	26	31	5	0.49
<i>including</i>	29.6	30	0.4	1.15
HANNI006	49	55	6	0.3
HANNI006	60	68	8	0.54
<i>including</i>	62	63	1	2.45
HANNI006	72	76	4	0.23

Next exploration steps:

- Step out drilling of Hirsikangas deposit: mineralised parallel structure (1250m/EUR500K) & SE extension (1250m/EUR500K).
- Further drill testing of Hanni occurrences.
- Additional BoT/IL and geophysical exploration on the contact area (EUR500K).
- Exploration budget 1.5 M€