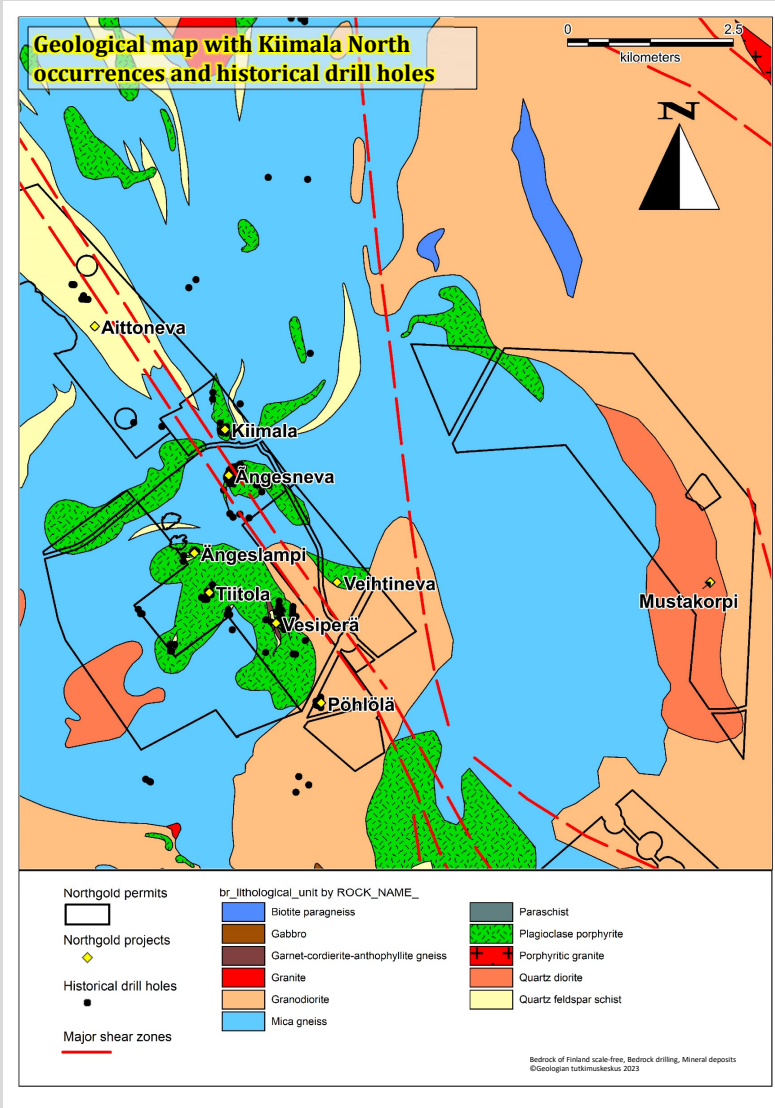
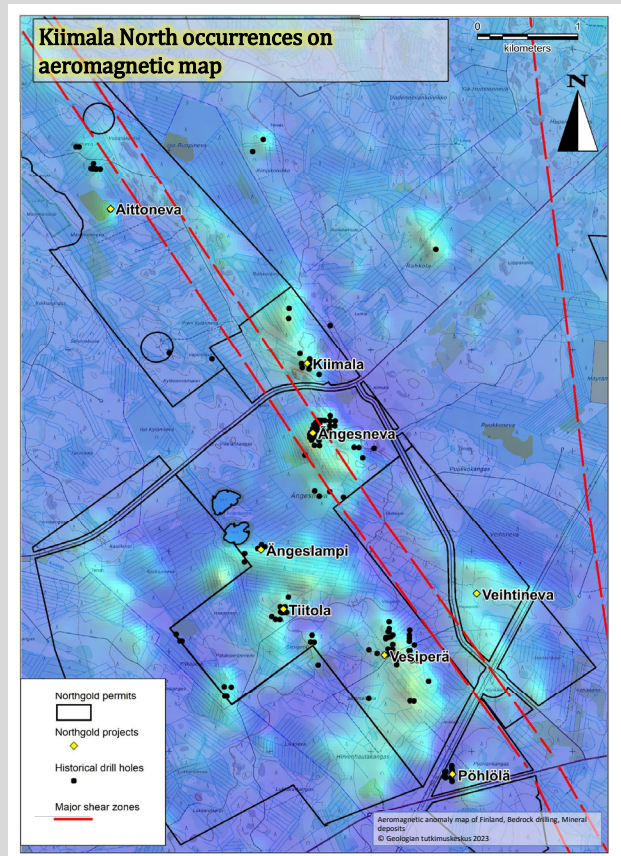


KIIMALA TREND

- The northwest trending Kiimala shear zone is one of the main structures of the Raahe-Ladoga suture zone.
- This crustal scale structure and the related second level shear zones have been important in controlling the mineralised bodies in Kiimala region.
- The structure is hosting 11 currently known gold occurrences and Aittoneva base metal occurrence along 20 km strike length.



- Indicated resource estimate (2010) of 3.85 Mt at a grade of 1.19 g/t Au, based on cut-off grade of 0.5 g/t Au has been reported from Ängesneva.
- A non-compliant resource estimate from Vesiperä reports Inferred mineral resource of 0.3 Mt @ 2.5 ppm Au and 0.8% As.
- Significant exploration potential along at least 10 km strike length of the structure.



Next exploration steps:

- Modeling Ängesneva deposit and studying its further potential.
- BoT program to follow up mineralised trends identified in 2023 IL sampling program at Veihtineva and Mustakorpi.
- More IL profiles where ground allows sampling.